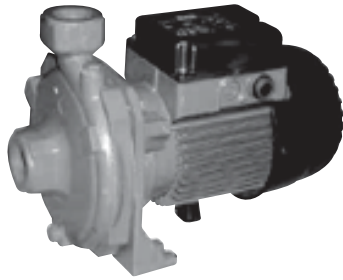


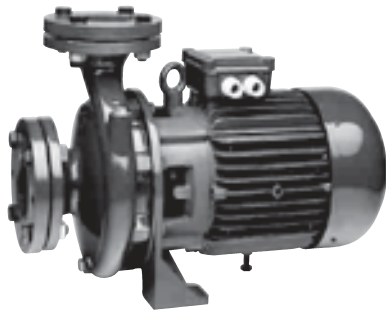


K - SINGLE IMPELLER

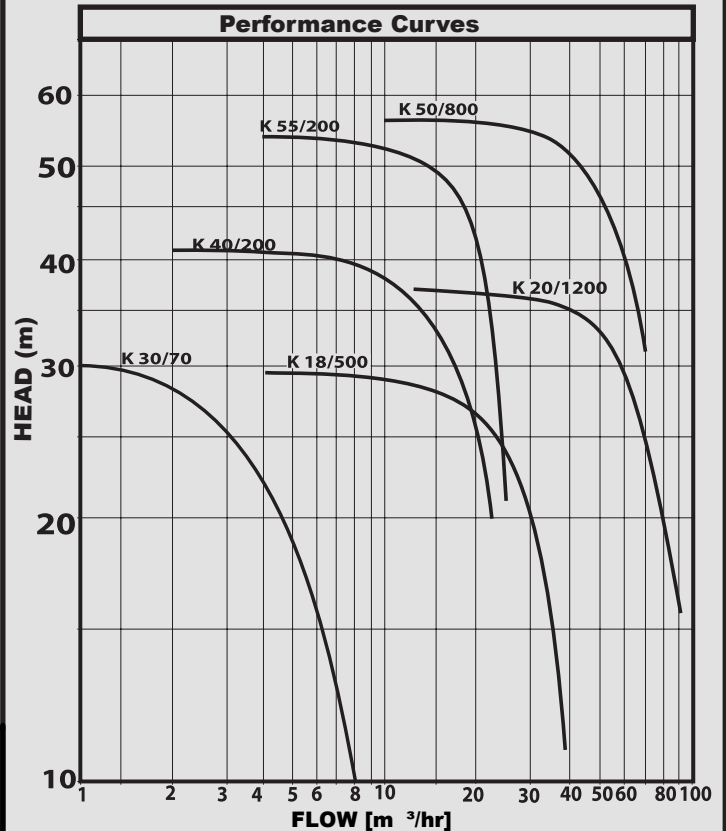
CENTRIFUGAL PUMPS



K30/70, K40/200, K55/200



K18/500, K20/1200, K50/800



APPLICATIONS

Single impeller centrifugal pumps suitable for domestic, civil, industrial and agricultural installations.

CONSTRUCTION FEATURES

Cast iron pump body and motor support, Technopolymer or cast iron impeller and Carbon/Ceramic mechanical seal. Induction motor, closed and cooled with external ventilation, built-in thermal and current overload protection

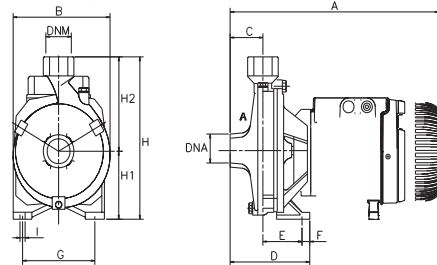
Motor Protection: IP44

Terminal box protection: IP55

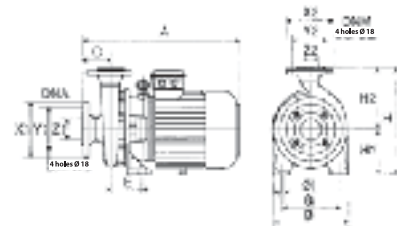
Insulation Class: F

Liquid Quality Requirements: Clean, free of solids or abrasive substances, non-viscous, non-aggressive, non-crystallized, chemically neutral, close to the characteristics of water.

K30/70, K40/200, K55/200



K18/500, K20/1200, K50/800



TECHNICAL DATA

Model	V	kW	Amps	A	B	C	D	E	G	ØI	H	H1	DNA	DNM	IMPELLER MATERIAL	Max Temp	Max Pressure	WEIGHT KG
K30/70	240V	0.75	6	300	185	50	108	58	140	9	235	100	1" G	1" G	Technopolymer	50°C	6bar	13.9
K40/200	415V	3	6.4	425	250	55	-	86	175	14	320	135	2" G	1" G	Technopolymer	50°C	6bar	34.9
K55/200		4	9.4	425	250	55	-	86	175		320	135	2" G	1" G	Technopolymer			
K18/500		3	5.9	440	240	62	-	100	155		312	132	2" G	1" G	Cast Iron	110°C	8bar	36.6
K20/1200		7.5	15.4	600	273	100	-	110	212		385	160	80	65	Cast Iron			
K50/800		11	20.5	600	273	100	-	110	212		385	160	80	65	Cast Iron			