



### APPLICATIONS

The CR pumps are non self priming verticle multi-stage pumps suitable for a wide range of applications including water transfer, irrigation, boosting and industrial use

### CONSTRUCTION FEATURES

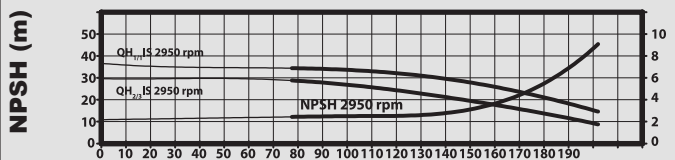
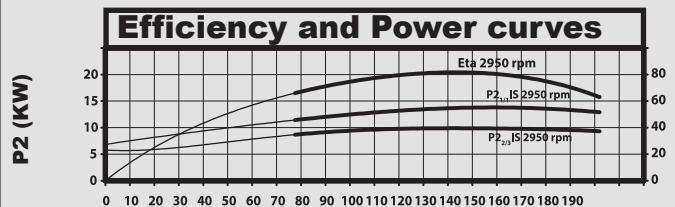
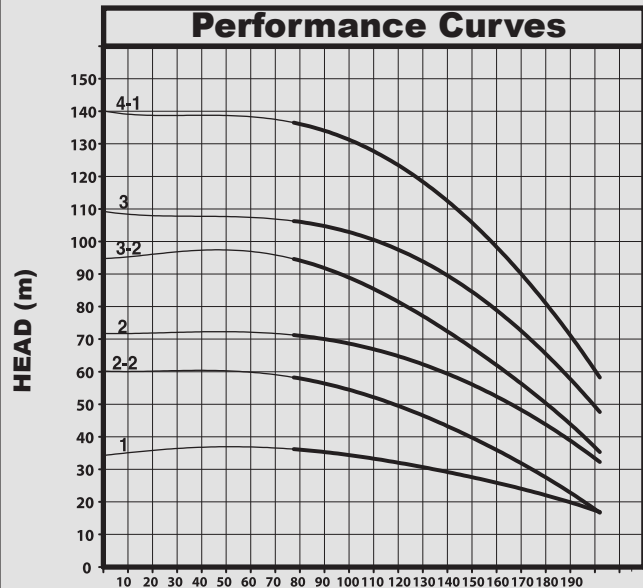
The pump consists of a base and a pump head. The chamber stack and the sleeve are secured between the base and the pump head by means of staybolts. The base has suction and discharge ports at the same level (in-line). All pumps are fitted with a maintenance free mechanical shaft. The pump is fitted with a totally enclosed fan-cooled 2 pole Grundfos standard motor with principal dimensions to EN standards. CRN version available for aggressive liquids and CRE version with frequency controlled motors for applications characterized by demand of variable flow at constant pressure

**Pump Liquids:** Clean, thin, non-aggressive liquids without solid particles and fibre.

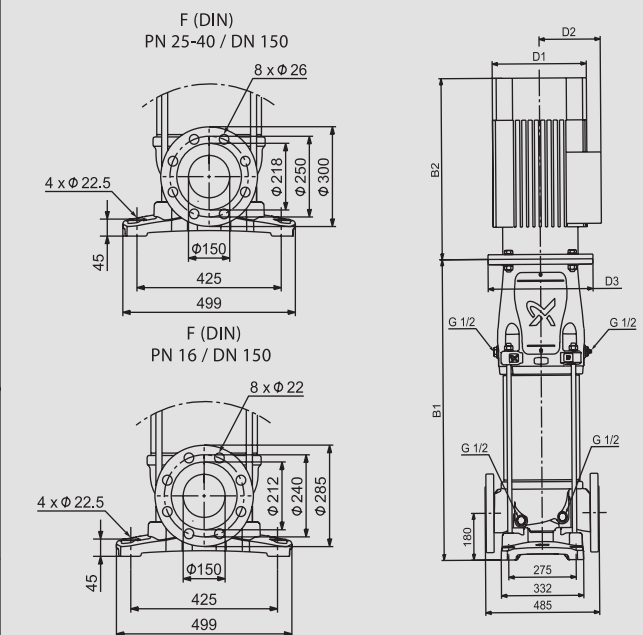
**Liquid temperature:** -20°C to 120°C

**Ambient temperature:** 60°C max.

**Max. Operating pressure:** 25bar



FLOW [m³/hr]



### TECHNICAL DATA

Pump Type	Motor		Full Load Current(A)	Dimensions			Weight [kg]
	kW	HP		B1	B1 + B2	D1	
CR 155-1	15	20	26	783	1254	314	226
CR 155-2-2	22	30	39.5	905	1446	314	264
CR 155-2	30	40	51	907	1518	396	381
CR 155-3-2	37	50	63	1029	1665	396	416
CR 155-3	45	60	74	1052	1760	449	492
CR 155-4-1	55	75	90	1172	1919	497	594