



APPLICATIONS

SP pumps are primarily used to pump raw water from underground. The pumps are installed in boreholes or wells submerged below water. They are also suitable for raw water supply, irrigation, ground water lowering, pressure boosting, fountain applications as well as mining.

CONSTRUCTION FEATURES

Energy optimized ErP ready stainless steel centrifugal submersible pump coupled to asynchronous two pole submersible motor made in AISI 304 stainless steel for parts in contact with water. Cooling and lubrication of the thrust bearing and carbon brushes is provided by a mixture of water and glycol.

OPERATING CONDITIONS

To ensure long and trouble free life, it is important the following are observed.

Electrical Protection

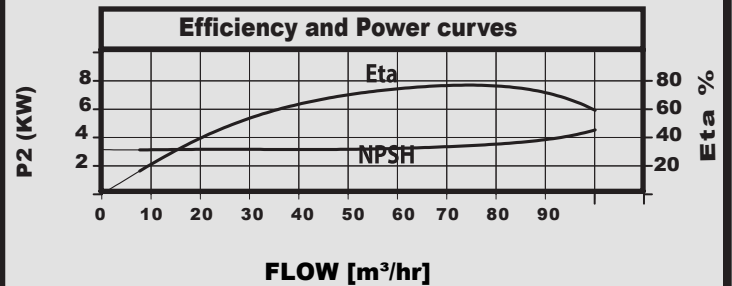
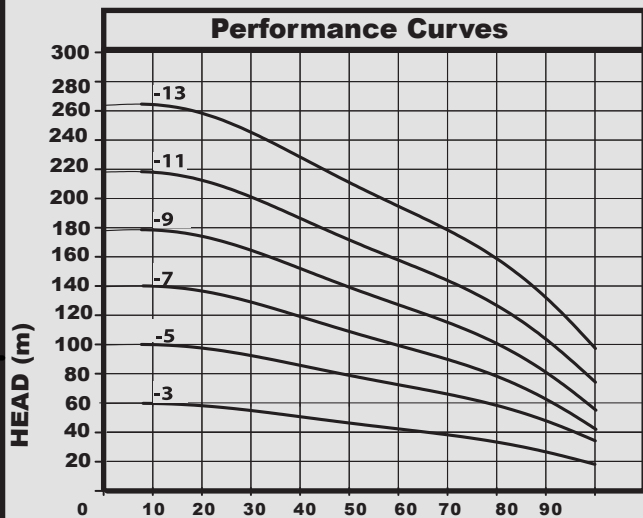
A suitably sized control panel incorporating a Grundfos MP204 controller should be fitted to protect the pump.

Minimum and Maximum Flow Rate

To ensure sufficient cooling of the motor, the pump must NOT run continuously at a flow rate below 0.1 X nominal flow rate or above 1.3 X nominal flow rate due to upthrust and cavitation.

Pump Liquids: Clean, thin, non aggressive liquids not containing solid particles or fibre larger than sand grains.

Max. Sand content: 50ppm **Liquid temp:** 40°C **Min. Borehole Diameter:** 200mm **Max. Install. depth below water:** 600m



TECHNICAL DATA

MODEL	Motor Type	Power (kW)	Full Load Current (A)	Dimensions					Weight [kg]
				A	B	C	D	E	
SP 77-3	MM6000	11	24.8	1511	637	874	139.5	178	75
SP 77-5	MM6000	18.5	42	1888	757	1131	139.5	178	95
SP 77-7	MM6000	26	57	2264	877	1387	139.5	178	114
SP 77-9	MM6000	30	66	2590	947	1643	139.5	178	129
SP 77-11	MMS6	37	80	3226	1312	1898	143	178	179
SP 77-13	MMS8000	55	114	3522	1350	2172	192	200	259

