

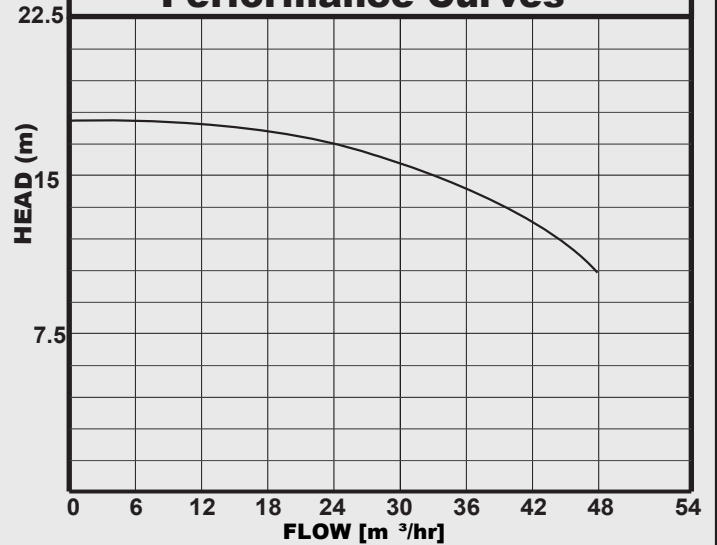
TAFLO

CS300

HORIZONTAL CENTRIFUGAL PUMP



Performance Curves



APPLICATIONS

The TAFLO CS300 range are twin impeller centrifugal pumps designed for continuous duty and are particularly suitable for bulk water transfer, pressure boosting, industrial use as irrigation systems

CONSTRUCTION FEATURES

Pump end comprises of cast iron pump body, Brass impellers and graphite/ceramic mechanical seal. Close coupled to squirrel cage induction motor, closed and cooled with external ventilation.

Motor Protection: IP44; **Insulation class:** B

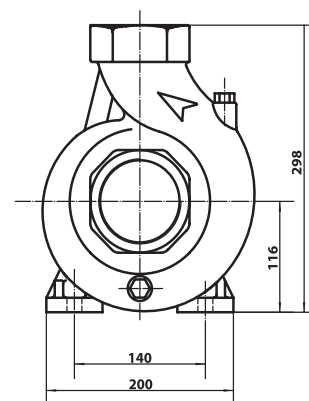
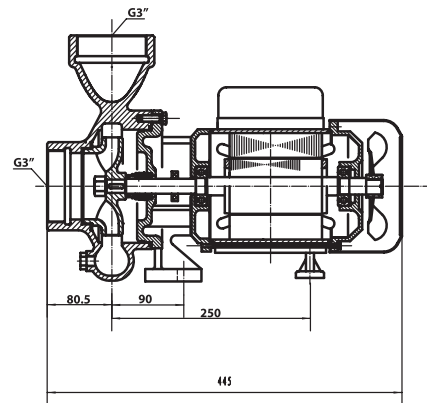
Terminal box protection: IP55

Liquid quality requirements: clean free from solids and abrasive substances.

Temperature: 0°C to 40°C

Maximum suction depth: 8 m at sea level

Maximum operating pressure: 8bar



TECHNICAL DATA

MODEL	VOLTAGE	kW	HP	DNA	DNM	WEIGHT KG
CS300	240V	2.2	3	3"	3"	35