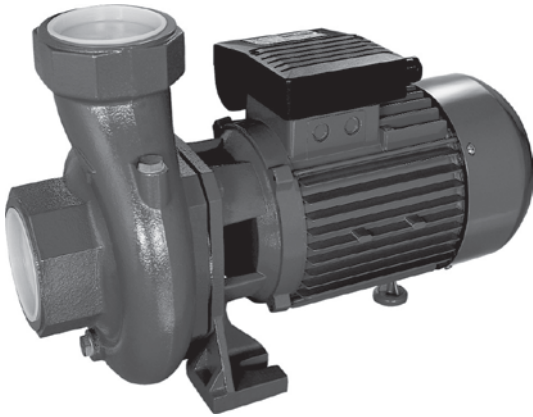


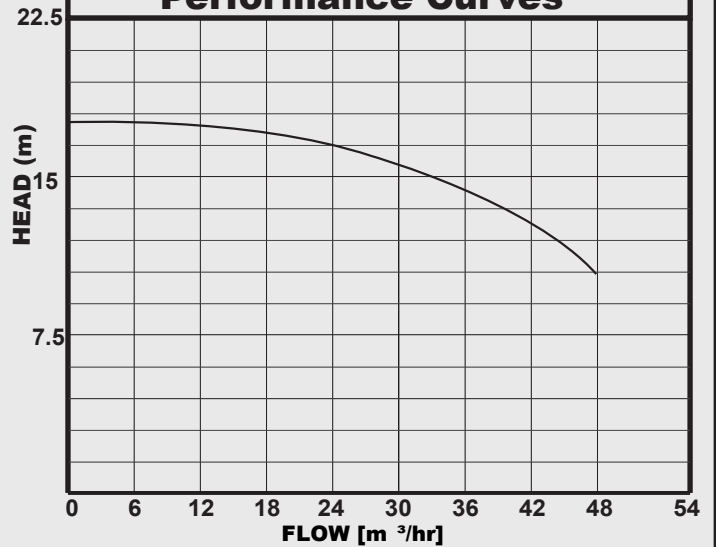
# TAFLO

## CS300

## HORIZONTAL CENTRIFUGAL PUMP



### Performance Curves



### APPLICATIONS

The TAFLO CS300 range are twin impeller centrifugal pumps designed for continuous duty and are particularly suitable for bulk water transfer, pressure boosting, industrial use as irrigation systems

### CONSTRUCTION FEATURES

Pump end comprises of cast iron pump body, Brass impellers and graphite/ceramic mechanical seal. Close coupled to squirrel cage induction motor, closed and cooled with external ventilation.

**Motor Protection:** IP44; **Insulation class:** B

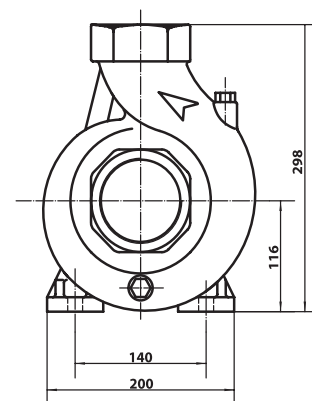
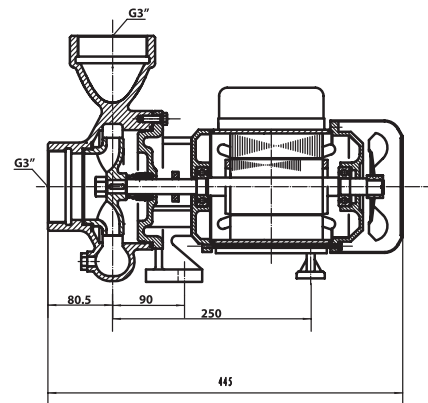
**Terminal box protection:** IP55

**Liquid quality requirements:** clean free from solids and abrasive substances.

**Temperature:** 0°C to 40°C

**Maximum suction depth:** 8 m at sea level

**Maximum operating pressure:** 8bar



### TECHNICAL DATA

MODEL	VOLTAGE	kW	HP	DNA	DNM	WEIGHT KG
CS300	240V	2.2	3	3"	3"	35