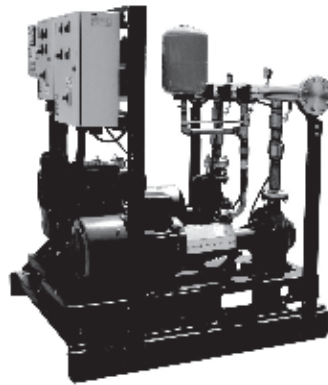


# TAFLO

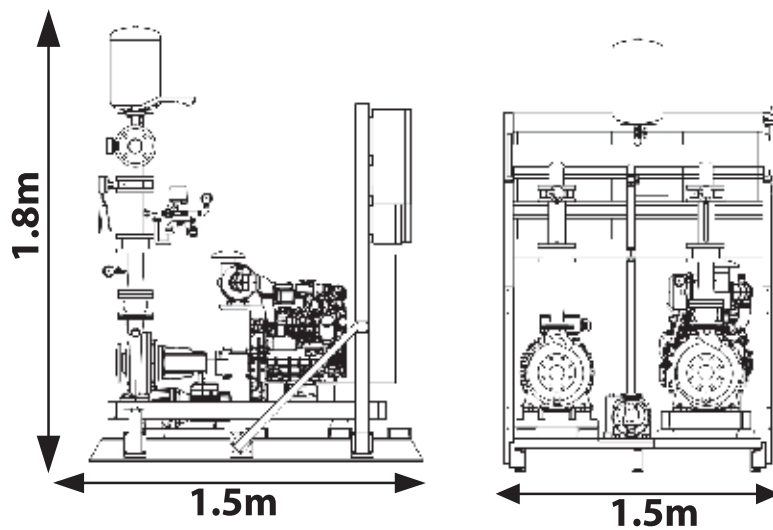
**FTS**

**FIRESET**



## APPLICATIONS

FTS fire fighting units consists of one end suction electric main pump + one end suction diesel engine driven standby pump + one jockey pump, all mounted on a fan base frame  
The centrifugal pumps are back pull-out design, axial suction and radial discharge, cast iron pump casing, coupled to a three phase asynchronous electric motor for the main duty pump and with diesel engine for the stand by pump. A suitably sized jockey pump is also fitted to maintain system pressure. Three independent operation control panels are fitted for each pump wired to three pressure switches preset to the required system pressure. A suitably sized pressure tank



## TECHNICAL DATA

MODEL	FLOW (m3/h)	HEAD (m)	MOTOR POWER (kW)	ENGINE POWER (kW)	PIPE SIZE
FTS 50-32-160/182	25	42	5.5	5.5	3"
FTS 50-32-200/204	26	50	7.5	7.5	3"
FTS 65-40-200/212	36	58	11	15	4"
FTS 80-50-200/202	55	55	11	15	4"
FTS 80-50-200/213	72	60	18.5	18.5	4"

Note: Engine size based on 1600metres above sea level.