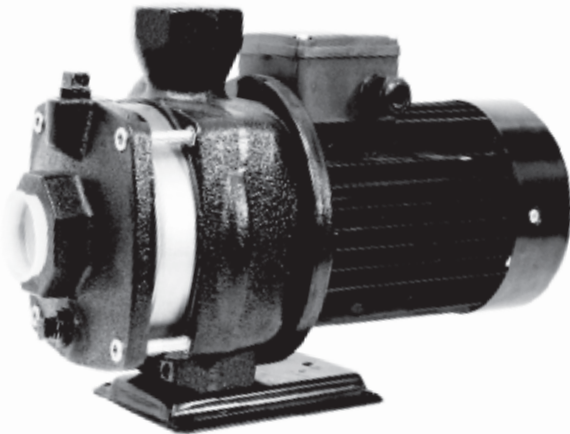


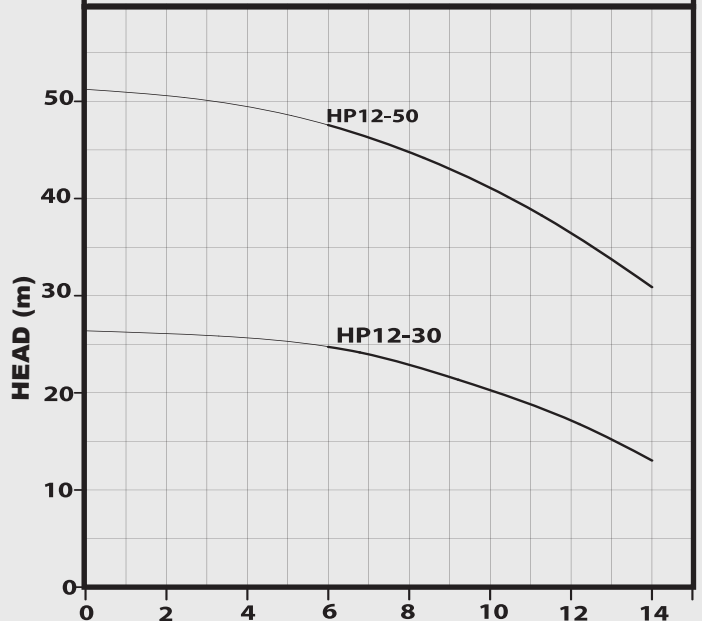
# TAFLO

## HP12

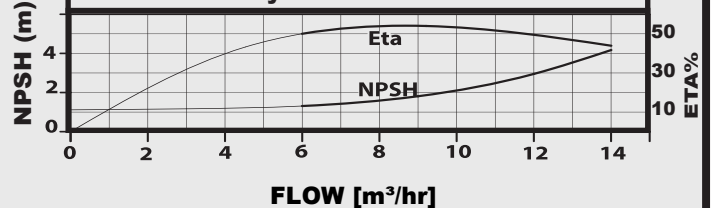
## HORIZONTAL MULTI-STAGE PUMP



### Performance Curves



### Efficiency and Power curves



### APPLICATIONS

The TAFLO HP range are horizontal design multi-stage pumps suitable for pressure boosting, water transfer and agriculture applications.

### CONSTRUCTION FEATURES

Robust cast iron suction and delivery housings, stainless steel impellers, diffusers and wearings coupled to asynchronous two pole air cooled squirrel cage motor with inbuilt thermal overload protection. The pumps are designed for efficient and dependable performance and a long and trouble-free life.

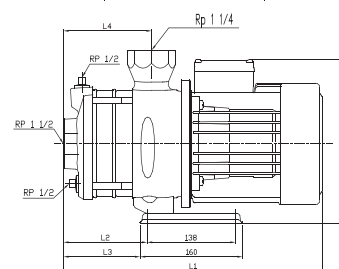
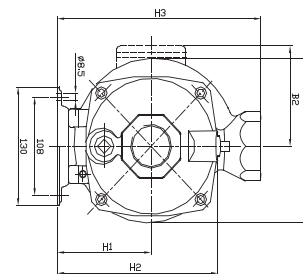
**PUMPED LIQUIDS:** Clean, thin, non-aggressive liquids without solid particles

**LIQUID TEMPERATURE:** Maximum 0°C to +90°C

**ENCLOSURE CLASS:** IP54

**INSULATION CLASS:** F

**RPM:** 2850



### TECHNICAL DATA

MODEL	kW	Voltage	Amps	mm										WEIGHT [kg]
				L1	L2	L3	L4	B1	B2	H1	H2	H3	H4	
HP12-30	1.3	240	6.5	390	84	72	108	181	136	112	190	240	248	20.62
HP12-50	2.4	415	5.2	450	132	120	138	181	141	112	190	240	253	29.3