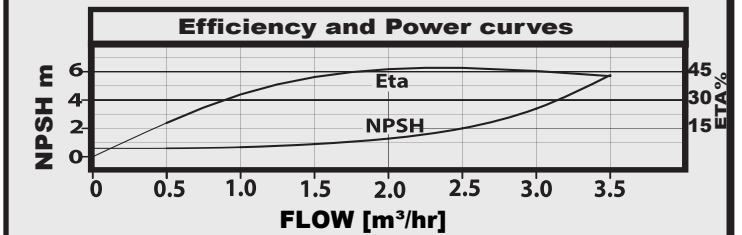
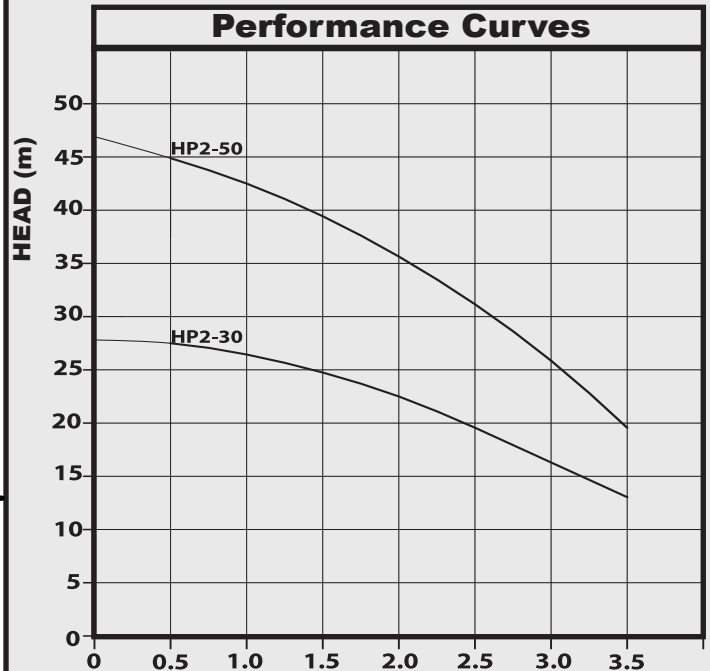
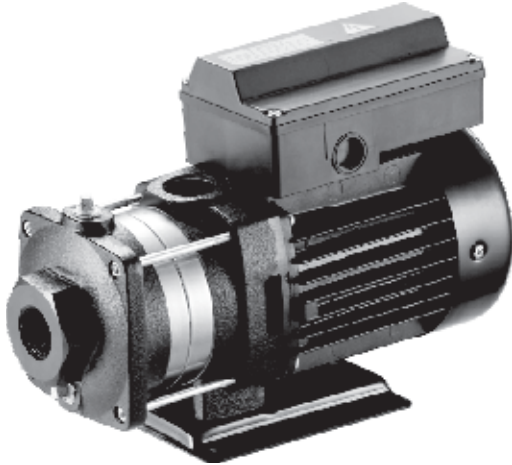


TAFLO

HP2

HORIZONTAL MULTI-STAGE PUMP



APPLICATIONS

The TAFLO HP range are horizontal design multi-stage pumps suitable for pressure boosting, water transfer and agriculture applications.

CONSTRUCTION FEATURES

Robust cast iron suction and delivery housings, stainless steel impellers, diffusers and wearings coupled to asynchronous two pole air cooled squirrel cage motor with inbuilt thermal overload protection. The pumps are designed for efficient and dependable performance and a long and trouble-free life.

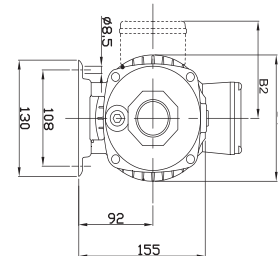
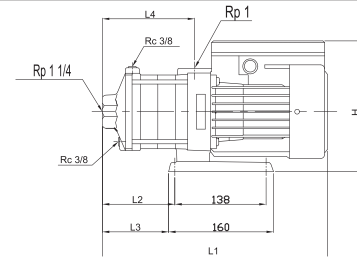
PUMPED LIQUIDS: Clean, thin, non-aggressive liquids without solid particles

LIQUID TEMPERATURE: Maximum 0°C to +90°C

ENCLOSURE CLASS: IP54

INSULATION CLASS: F

RPM: 2850



TECHNICAL DATA

MODEL	kW	Voltage	Amps	mm							WEIGHT [kg]
				L1	L2	L3	L4	B1	B2	H	
HP2-30	0.36	240	2.2	327	93	81	119	141	127	228	10.5
HP2-50	0.55	240	3.2	363	129	117	155	141	127	228	11.6