

# TAFLO

## HW25

## CIRCULATOR PUMP



### APPLICATIONS

The TAFLO HW25 is a hot water circulated pumped designed for circulation of water in heating and their conditioning systems

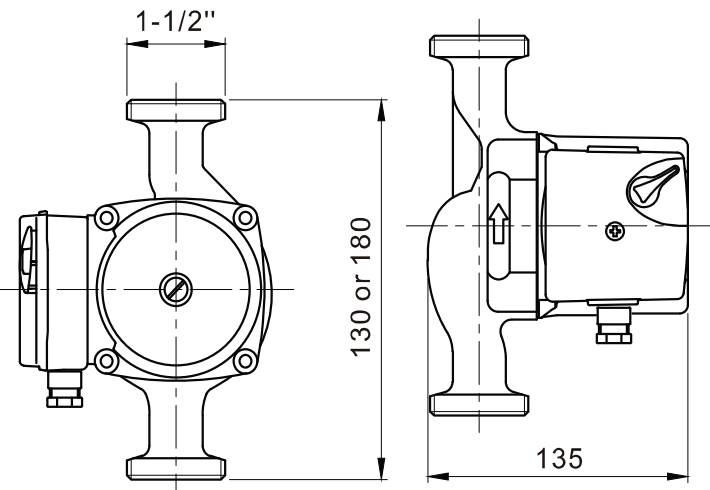
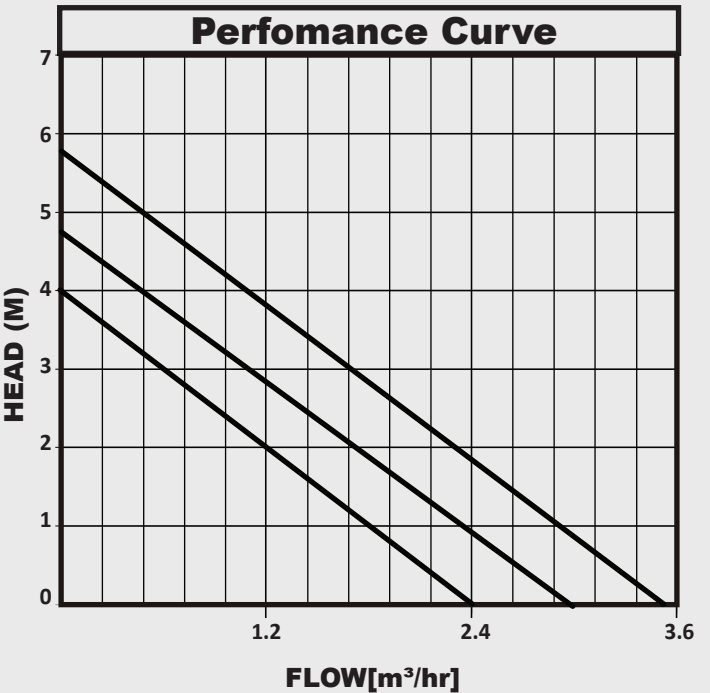
### CONSTRUCTION FEATURES

- Canned motor type i.e pump and motor form integral unit without a shaft seal and with only two ceramic bearing for sealing. The bearings are lubricated by the pumped liquid.
- Pump **MUST** be installed with the shaft in an horizontal position in order to allow for sufficient lubrication.
- Low noise
- Low energy consumption
- Easy installation
- Incorporate an on/off switch
- Male threaded connection

**Pump Liquids:** Clean water, non-corrosive and non-abrasive liquids.

**Max. Ambient Temp:** 40°C

**Liquid Temp:** 0°C - 110°C



### TECHNICAL DATA

MODEL	VOLTAGE	POWER	CURRENT	MAX HEAD (m)	MAX FLOW (m3/hr)	INLET/ OUTLET	WEIGHT (kg)
HW-25-60-180	240	46.6W	0.32	6	3.5	1/2"	2.6