

APPLICATIONS

DWK pumps are typically used for the transfer of drainage water, surface water, ground water and water containing abrasives.

CONSTRUCTION FEATURES

DWK pumps are designed with semi-open or enclosed impeller for pumping water in a wide range of building and industrial applications. The pumps are made of resistance materials such as cast iron, heavy duty ballbearings greased for life, double shaft seal system in oil chamber which ensures trouble-free operation. Intergrated cooling jacket which helps keep the motor temperature low and overload protection

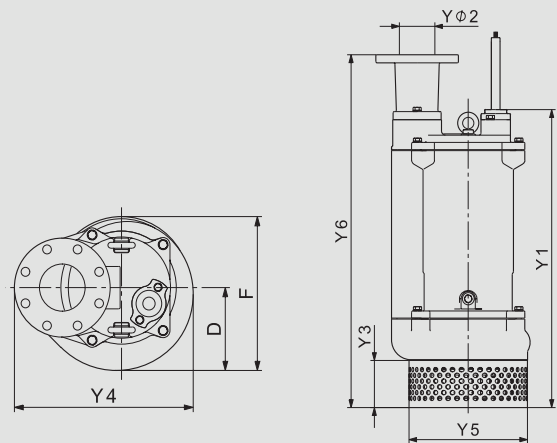
pH Range: 4-10

Liquid temperature range: 0°C to 40°C

Density of pumped liquid: 1100kg/m³

Max. solids size: 13mm

Max. Installation depth: 25m



TECHNICAL DATA

Pump Type	Voltage	kW	Current [A]	Y1	Y2	Y3	Y4	Y5	Y6	D	F	Weight [kg]
DWK 50.15	415	1.5	3.6	428	50	65	231	202	417	110	213	41
DWK 80.22	415	2.2	5.1	448	80	65	231	202	437	110	213	45
DWK 80.37	415	3.7	8.2	591	75	90	286	234	566	134	253	81
DWK 100.55	415	5.5	11.9	734	100	116	353	302	709	177	323	110
DWK 150.110	415	11	23	779	150	116	353	302	754	177	323	190