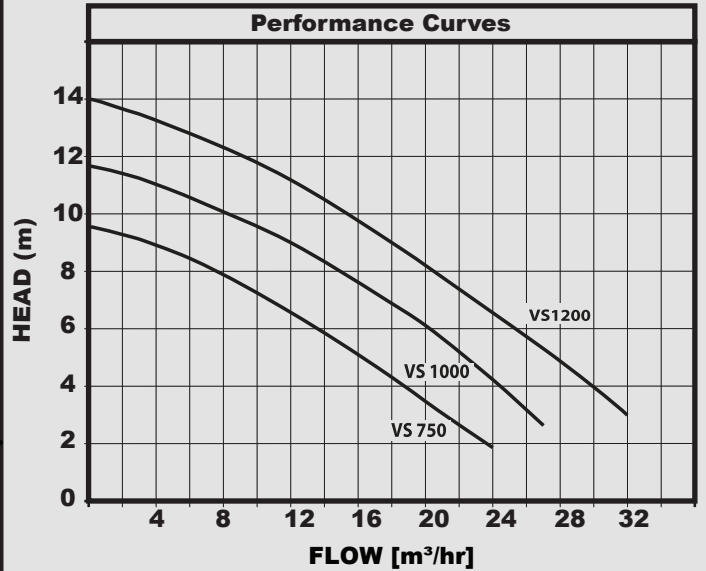




# FEKA VS SEWAGE PUMPS



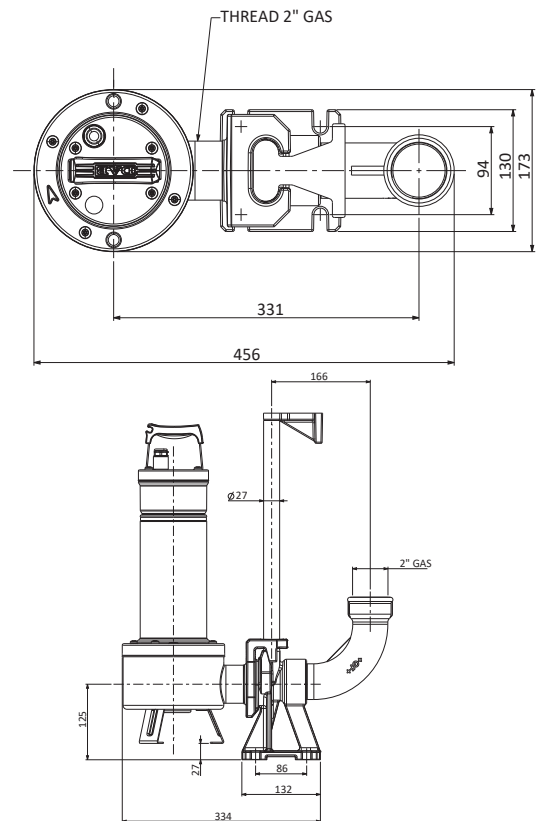
## APPLICATIONS

Submersible centrifugal pump with liquid vortex cast steel impeller, suitable for pumping sewer water and waste water in general containing solids up to a maximum size of 50mm

## CONSTRUCTION FEATURES

Stainless steel pump casing, sseal cover, motor casing Handle with insulating rubber cover. AISI 316 stainless steel drive shaft. Double mechanical seal with intermediate oil chamber(atoxic oil), in carbon /alumina on the motor side and silicon carbide on the pump side. Dry asynchronous, sealed and cooled by the pumped liquid. Rotor mounted on greased for-life ball bearings, overoversized and selected to guarantee greater noise reduction and duration.

**Motor protection rating:** IP68. **Insulation class:** F. **Free Passage:** 50mm. **Liquid temp. range:** 0°C to 35°C  
**Max. immersion depth:** 10metres, **Insulation:** Vertical position



## TECHNICAL DATA

MODEL	VOLTAGE	kW	HP	Amps	A	B	D	H	H1	DNM	WEIGHT KG
FEKA VS 750 M-A	240V	0.75	1	5.13	203	170	172	492	98	2"	17.5
FEKA VS 1000 M-A		1	1.36	6.63				537			19.3
FEKA VS 1200 M-A		1.2	1.6	8.63				537			20.8