

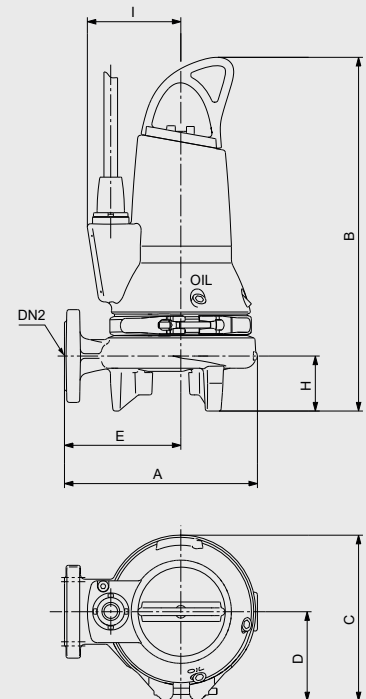
APPLICATION

The SEG pumps are designed with a grinder system which grinds solids into small pieces so that they can be led away through outlet pipes of a relatively small diameter. The pumps are made of wear-resistant materials, such as cast iron and stainless steel. These material ensure reliable operation.

CONSTRUCTION FEATURES

All pumps have the following features:

- cable connection to motor via stainless-steel cable plug
- corrosion-resistant cable entry filled with watertight polyurethane potting compound
- clamp connection between motor and pump
- cartridge shaft seal
- heavy-duty bearings greased for life
- patented grinder system ensuring extremely high easy impeller clearance adjustment in order to maintain peak performance
- thermal switches built into the motor windings providing protection against overheating
- explosion-proof motors for potentially explosive environments.



TECHNICAL DATA

MODEL	Voltage [V]	Power [kW]	Current (A)	Particle Size(mm)	A	B	C	D	Weight (kg)
SEG40.12.2.1	1x240	1.6	8	80	255	466	216	99	42
SEG40.40.25.2	3x415	4.9			292	562	256	119	76